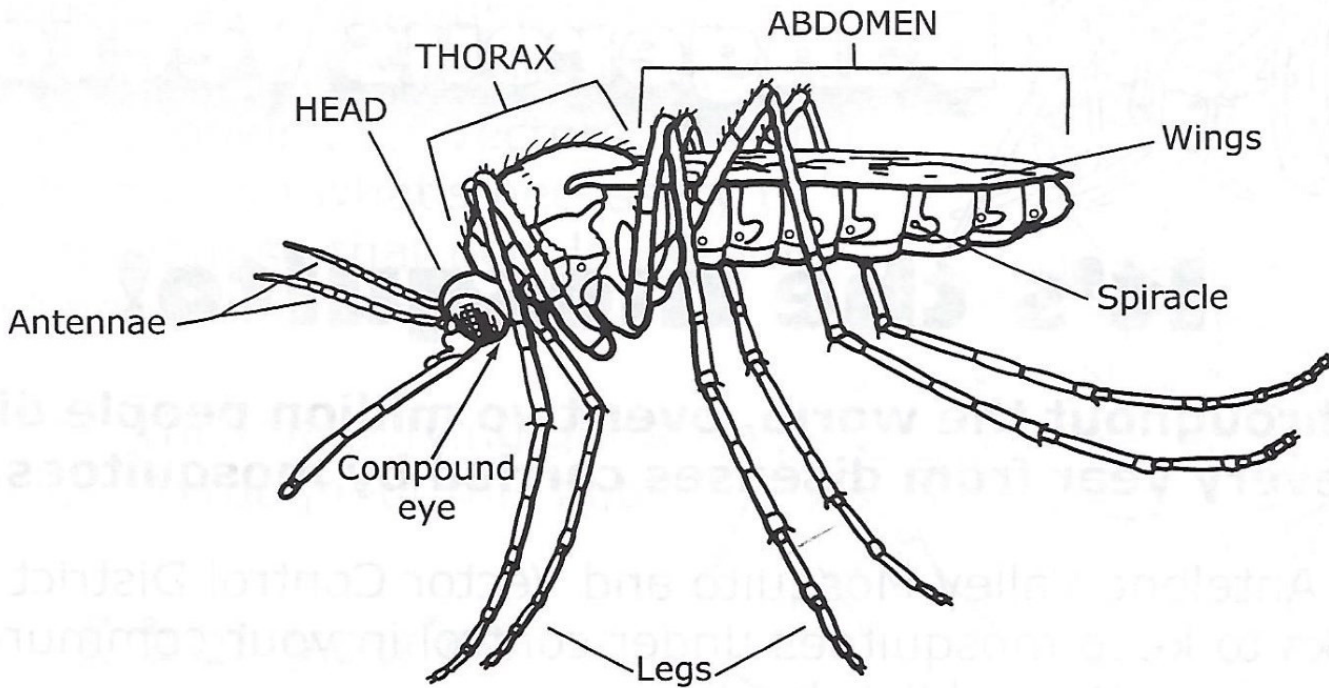


What's a Mosquito?



Anatomy is the study of the body parts that make up an animal.

A mosquito is an **insect** and all insects have three major body parts to their bodies: **HEAD**, **THORAX** and **ABDOMEN**. The soft body tissues inside an insect are protected and supported by a rigid outer covering called an **exoskeleton**.

Located on the head are: two **compound eyes** that allow insects to see in every direction at once and a pair of antennae.

The thorax has **6 jointed legs**, with 3 on each side. If the insect has wings, they are attached at the top of the thorax. Insects that fly have either 2 or 4 wings. The mosquito has **2 wings**.

The last body region, the abdomen, is long and segmented. Breathing holes, called **spiracles**, are located on both sides of each segment.

Look for these body parts in the mosquito diagram above.